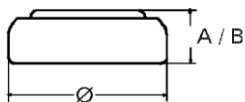


## Data Sheet

**Type Number** ..... 20346  
**Designation IEC** ..... SR 712 SW  
**System** ..... Silver oxide / Zinc /  
 NaOH - Electrolyte



**Nominal Voltage** ..... 1,55 V  
**Typical Capacity C** ..... 9 mAh  
 Load 68,1 kOhm, at 20°C down to 1.2 V

**Weight (approx.)** ..... 0,3 g  
**Volume** ..... 0,06 ccm  
**Coding**..... Date of Manufacturing  
 Month / Year

**Temperature Ranges** min max.  
 Storage ..... -10°C 65°C  
 Discharge ..... -10°C 65°C

**Dimensions** min max.  
 Diameter (Ø) ..... 7,65 7,90  
 Height (A/B) ..... 1,14 1,29

**Segment** ..... Watch

**Main Applications** ..... Watch  
 Photo  
 Electronic

### Typical Capacities (at 20 °C)

Discharge Type	Load	End Voltage:	1.2 V
Continuous	68100 Ω	Time:	390 h
24h/d,7d/w		Capacity [mAh]:	9
Current [µA]:	23	Energy [mWh]:	14

All Data contained herein is for single cells

For battery applications, performance data may vary from single cell data, depending on specific battery configuration

VARTA Microbattery GmbH, Daimlerstr. 1, D-73479 Ellwangen/Jagst  
 Tel.: (+49) 7961/921-0, Telefax: (+49) 7961/921-553

Subject to change without prior notice!  
 Date of issue: 2012-04-12