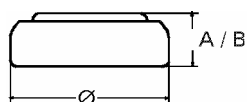


Data Sheet

Type Number 20393
Designation IEC SR 48
System Silver oxide / Zinc /
 KOH - Electrolyte



Nominal Voltage 1,55 V
Typical Capacity C 75 mAh
 Load 13 kOhm, at 20°C down to 1.2 V

Weight (approx.) 1,08 g
Volume 0,24 ccm
Coding..... Date of Manufacturing
 Month/Year

Temperature Ranges
 Storage min max.
 -10°C 65°C
 Discharge -10°C 65°C

Dimensions
 Diameter (Ø) min max.
 7,55 7,9
 Height (A/B) 5,0 5,4

Segment Watch / High Drain

Main Applications Watch
 Photo
 Electronic

Typical Capacities (at 20°C)

Discharge Type	Load	End Voltage:	1.2 V
Continuous	13000 Ω	Time:	615 h
24h/d, 7d/w		Capacity [mAh]:	75
Current [µA]:	120	Energy [mWh]:	115