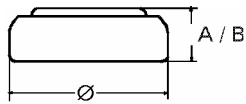


Data Sheet

Type Number 20386
Designation IEC SR 43
System Silver oxide / Zinc /
 KOH - Electrolyte



Nominal Voltage 1,55 V
Typical Capacity C 115 mAh
 Load 5.6 kOhm, at 20°C down to 1.2 V

Weight (approx.) 1,78 g
Volume 0,39 ccm
Coding..... Date of Manufacturing
 Month/Year

Temperature Ranges

	min	max.
Storage	-10°C	65°C
Discharge	-10°C	65°C

Dimensions

	min	max.
Diameter (Ø)	11,25	11,6
Height (A/B)	3,8	4,2

Segment Watch / High Drain

Main Applications Watch
 Photo
 Electronic

Typical Capacities (at 20°C)

Discharge Type	Load	End Voltage:	1.2 V
Continuous	5600 Ω	Time:	415 h
24h/d, 7d/w		Capacity [mAh]:	115
Current [µA]:	275	Energy [mWh]:	178