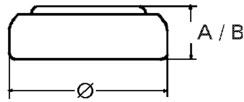


Data Sheet

Type Number 20390
Designation IEC SR1130SW (SR54)
System Silver oxide / Zinc /
 NaOH - Electrolyte



Nominal Voltage 1,55 V
Typical Capacity C 60 mAh
 Load 5.6 kOhm, at 20°C down to 1.2 V

Weight (approx.) 1,32 g
Volume 0,28 ccm
Coding..... Date of Manufacturing
 Month / Year

Temperature Ranges	min	max.
Storage	-10 °C	65 °C
Discharge	-10 °C	65 °C

Dimensions	min	max.
Diameter (Ø)	11,25	11,60
Height (A/B)	2,75	3,05

Segment Watch
Main Applications Watch
 Photo
 Electronic

Typical Capacities (at 20 °C)

Discharge Type	Load	End Voltage:	1.2 V
Continuous 24h/d, 7d/w Current [µA]:	5600 Ω	Time:	218 h
	275	Capacity [mAh]:	60
		Energy [mWh]:	92